

Technical Data Sheet

Reagent: anti-CD4-Qdot™655 (lot 020807LE)

Antibody: T4/19Thy5D7*

Species/Isotype: Mouse/IgG2

Unit size: 100 tests

Description: T4/19Thy5D7 recognizes CD4 on human lymphocytes and cross reacts with rhesus macaque CD4. Antibody was conjugated to Qdot™655.

** This antibody was clustered at the 2nd and 3rd International Workshop on Human Leucocyte Differentiation Antigens (workshop code 506 and 77) and generously provided by Dr. Stuart Schlossman, Dana Farber Cancer Institute.*

Buffer: 50 mM borate, 1M Betaine, 0.2% BSA, pH 8.3

Directions for use: 5 ul antibody per test

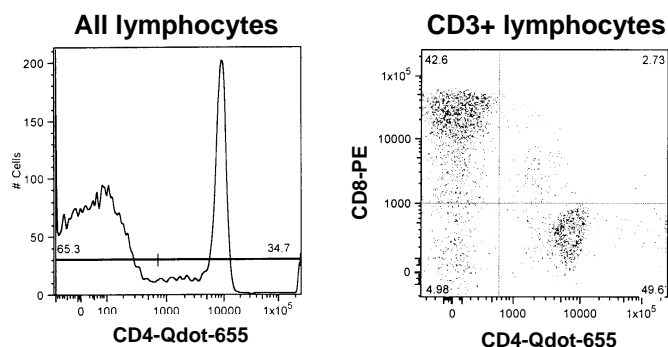
For information on excitation and emission spectra, and filter sets see:

<http://probes.invitrogen.com/resources/spectraviewer/>
<http://probes.invitrogen.com/products/qdot/filters.html>

NOTES ON USE:

1. **CENTRIFUGE AT 13,000g FOR 2 MINUTES TO REMOVE AGGREGATES BEFORE EACH USE.**
2. A significant loss of fluorescence intensity may occur if analysis is performed >24 hours after staining and fixation.
3. Use of this reagent in some whole blood lysis systems results in a substantial reduction in fluorescence. We have found that Versalyse™ is superior to ImmunoPrep™ system for preserving Qdot™ fluorescence.

Typical staining of rhesus PBMC, 20 mW violet laser, filter set: 630DCLP and 660/40DF.



For Research Use Only- All reagents are to be used in accordance with the terms of the Resource registration agreement.



NIH NONHUMAN PRIMATE REAGENT RESOURCE

<http://nhpreagents.bidmc.harvard.edu>

Beth Israel Deaconess Medical Center

Research East 113

330 Brookline Avenue

Boston, MA 02215

617-667-4583

The NIH Nonhuman Primate Reagent Resource is sponsored by the National Center for Research Resources and the National Institute of Allergy and Infectious Diseases, NIH

<http://aids.med.harvard.edu/cfar/cores/immunology.htm>