

Technical Data Sheet

Reagent: anti- $\alpha 4\beta 7$ integrin-APC

Antibody: A4B7

Species: Rhesus recombinant

Isotype: IgG1

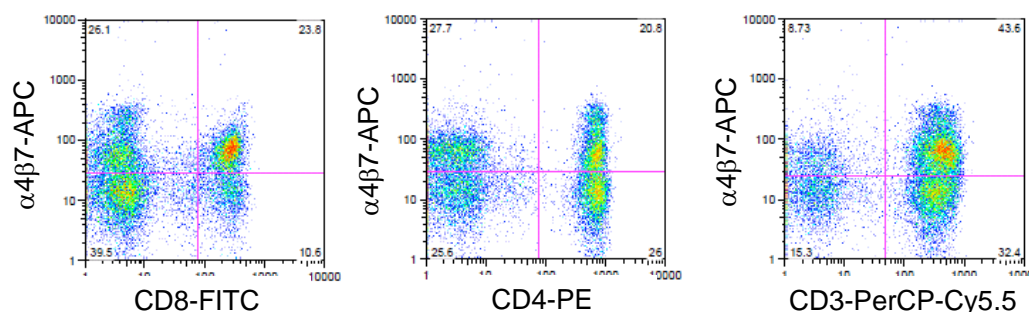
Unit size: 100 tests

Description: A4B7 is a rhesus recombinant antibody that binds to the macaque $\alpha 4\beta 7$ integrin and is cross-blocked the mouse anti-human anti- $\alpha 4\beta 7$ antibody, Act-1*.

* Lazarovits AI, et al. *J. Immunol.* 1984; 133:1857

Directions for use: 5 ul per test

Typical staining of rhesus macaque whole blood:



For Research Use Only- All reagents are to be used in accordance with the terms of the Resource registration agreement.



NIH Nonhuman Primate Reagent Resource

<http://nhpreagents.bidmc.harvard.edu>

Beth Israel Deaconess Medical Center

Center for Life Sciences 1038

330 Brookline Avenue

Boston, MA 02215

617-735-4476

A research resource sponsored by the National Center for Research Resources and the National Institute of Allergy and Infectious Diseases, NIH