

Technical Data Sheet

Reagent: anti-CD8-Qdot™655 (LOT 120707LE)

Antibody: T8/7Pt-3F9*

Species/Isotype: Mouse/IgG2

Unit size: 100 tests

Description: T8/7Pt-3F9 recognizes CD8 alpha chain on human lymphocytes and cross reacts with rhesus macaque CD8. Antibody was conjugated to Qdot™655 by Reamatrix.

** This antibody was clustered at the 2nd International Workshop on Human Leucocyte Differentiation Antigens (workshop code 91) and generously provided by Dr. Stuart Schlossman, Dana Farber Cancer Institute.*

Buffer: 50 mM borate, 1M Betaine, 0.2% BSA, pH 8.3

Directions for use: 5 ul antibody per test

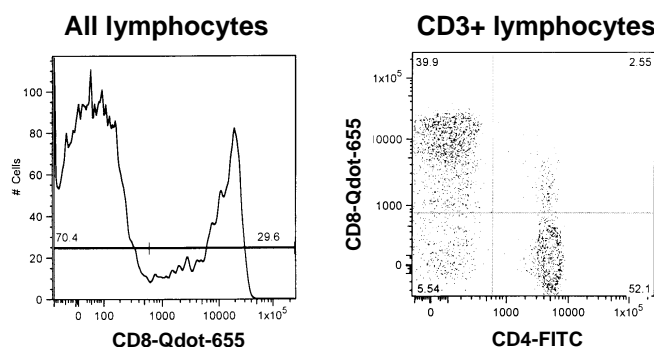
For information on excitation and emission spectra, and filter sets see:

<http://probes.invitrogen.com/resources/spectraviewer/>
<http://probes.invitrogen.com/products/qdot/filters.html>

NOTES ON USE:

1. **CENTRIFUGE AT 13,000g FOR 2 MINUTES TO REMOVE AGGREGATES BEFORE EACH USE.**
2. A significant loss of fluorescence intensity may occur if analysis is performed >24 hours after staining and fixation.
3. Use of this reagent in some whole blood lysis systems results in a substantial reduction in fluorescence. We have found that Versalyse™ is superior to ImmunoPrep™ system for preserving Qdot™ fluorescence.

Typical staining of rhesus PBMC, 20 mW violet laser, filter set: 630DCLP and 660/40DF.



For Research Use Only- All reagents are to be used in accordance with the terms of the Resource registration agreement.



NIH NONHUMAN PRIMATE REAGENT RESOURCE

<http://nhpreagents.bidmc.harvard.edu>

Beth Israel Deaconess Medical Center

Research East 113

330 Brookline Avenue

Boston, MA 02215

617-667-4583

The NIH Nonhuman Primate Reagent Resource is sponsored by the National Center for Research Resources and the National Institute of Allergy and Infectious Diseases, NIH