

## Technical Data Sheet

**Reagent:** anti-CD28 (co-stimulating)

**Antibody:** CD28.2\*

**Species/Isotype:** Mouse/IgG1

**Concentration:** 2.0 mg/ml

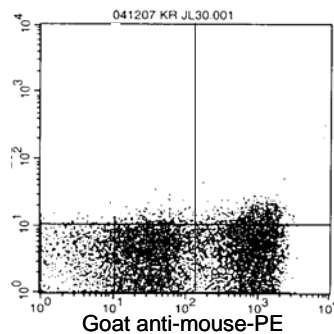
**Unit size:** 2.0 mg

**Description:** CD28.2 recognizes CD28 on rhesus and cynomolgus T lymphocytes.  
Protein A purified antibody.

*\* This antibody was generously provided by Dr. Daniel Olive, INSERM*

**Buffer:** PBS without sodium azide

**Reactivity:** Binding to rhesus PBMC (indirect stain).



*For Research Use Only- All reagents are to be used in accordance with the terms of the Resource registration agreement.*



NIH NONHUMAN PRIMATE REAGENT RESOURCE

<http://nhpreagents.bidmc.harvard.edu>

Beth Israel Deaconess Medical Center

Research East 113

330 Brookline Avenue

Boston, MA 02215

617-667-4583

*The NIH Nonhuman Primate Reagent Resource is sponsored by the National Center for Research Resources and the National Institute of Allergy and Infectious Diseases, NIH*